

# SECURE LOGIC FACT SHEET

## NATIONAL SECURITY COMMUNITY

### THE CHALLENGE

The digital landscape is evolving at a breakneck pace. This phenomenon both amplifies risks and engenders new opportunities to enhance our national security.

Traditional approaches to managing national security risks:

- **Offer Limited Visibility:** Traditional approaches to securing our country's sensitive environments, critical infrastructure, and other assets limit the visibility to critical risks. Current capabilities only tell part of the risk story.
- **Do Not Account for the Changing Risk & Digital Environment:** These approaches do not take into account the reality of today's - and tomorrow's - digital environment, the extraordinary growth trajectory of the Internet of Things (IoT), and what that means to national security missions.
- **Underutilize Data & Advanced Data Analytics Capabilities:** There are billions of untapped and readily available signals data points all around us. By leveraging the power of artificial intelligence and machine learning, these data points can provide a more complete picture of potential risks to any valued asset like a sensitive security facility, or thing, like a network of pipelines, or a moving vehicle.

A refreshed approach to mitigating national security risks is needed. National security leaders need smart, strategic, and innovation solutions that not only help better manage the risks of today by adapting to today's digital environment, but also help anticipate and be more resilient to the risks of tomorrow.

### IoT TRENDS

More personal and IoT devices are being connected than ever before, causing the quantity of transmitting signals to surge. This upward trend is only the beginning.

**~12.3 B** The number of IoT devices projected to be connected in 2021

**127** The number of new devices connected to the internet every second

**~27+ B** The number of IoT devices projected to be connected in the world by 2025

Each transmittable device emits an invisible signal that can be analyzed to provide a more meaningful picture of your risk landscape.



DEVICES & PRESENCE

### OUR SOLUTION



Signals awareness is a critical component of managing and combatting risks to our national security in the IoT era. Secure Logic understands this dynamic environment and has developed turnkey solutions to enhance digital and situational awareness, improve risk mitigation and help national security and defense leaders stay ahead of evolving risks.

Together, our ecosystem of hardware, software, advanced data analytics and support solutions:

- Identify, collect, track and categorize signals that enter a defined security perimeter
- Monitor and analyze Bluetooth, Wi-Fi and other cellular signals
- Employ artificial intelligence and machine learning technologies
- Establish patterns and create rich digital profiles or personas of devices
- Send real-time alerts when a device of interest is on the premises
- Identify and confirm routine patterns of behavior
- Flag anomalous activities that typically go undetected
- Operate around the clock
- Provide actionable intelligence
- Create another layer of authentication

*Signals technology goes beyond the traditional domains of security (visual, physical, digital) to provide a deeper level of understanding and awareness.*

## THE BENEFITS: HOW OUR INNOVATIVE SOLUTIONS HELP NATIONAL SECURITY LEADERS

By adopting and integrating our advanced signals awareness solutions, Secure Logic helps our national security and defense customers:



### Enhance Digital and Situational Awareness

Our signals analysis solutions improve awareness of potential risks within your areas of interest. Whether monitoring signals entering a secured facility, tracking signals near a moving vehicle, or collecting signals around a security perimeter, our solutions help national security leaders stay one step ahead of adversaries by detecting potential risks before they become serious threats.



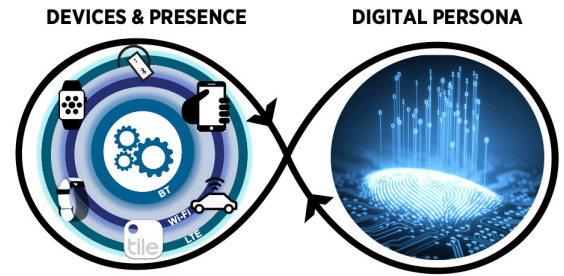
### Improve Risk Mitigation and Response

Our artificial intelligence and machine learning technologies translate millions of data points into a more complete picture of your risk landscape, enabling you to make more informed and swifter decisions to mitigate risks.



### Stay Ahead of the Evolving Digital Landscape and Improve Organizational Resilience

Our technologies not only analyze signals, they become smarter with every new IoT, transmitting devices or wearable that goes online. This helps government entities stay ahead of evolving digital trends and risks, and their potential impact on national security.



*Each transmittable device emits an invisible, low radio frequency (RF), or signal. There are millions of signals. We make sense of them.*

## AFFORDABLE SOLUTION, SEAMLESS IMPLEMENTATION

Secure Logic makes analyzing signals and enhancing your security environments effortless. Whether adopting our full suite of signal technologies as a stand-alone solution, or integrating our technologies to enrich existing enterprise-wide security platforms, our solutions are:

- Turnkey
- Customizable
- Highly-agile, deployable and adaptable
- Discrete
- Cost-effective, made with off-the-shelf materials

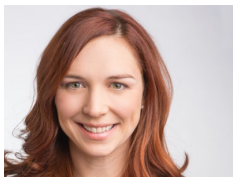
Additionally our signals solutions are:

- **Field-Tested**, and have completed over 30,000 hours of field testing
- **Patented** by the U.S. Patent & Trademark Office
- **Deployed by the USG**, and are having a significant impact in improving digital awareness for a U.S. Department of Defense customer



## OUR EXPERTS

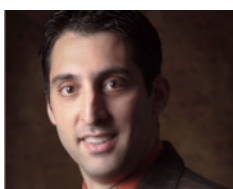
Our team is committed to helping organizations enhance their digital awareness and mitigate risks – it's our passion. With a combined 40 years of experience in national security, product and software development and business operations, Secure Logic's experts intimately understand the power of signals intelligence and advanced analytics in helping businesses and government entities alike improve awareness, mitigate risks and adapt to the evolving digital environment.



**Molly Mae Potter**  
CEO & Cofounder

A distinguished veteran, engineer and technologist, **Molly Mae Potter** has over 15 years' experience in the fields of national security, technology, and aviation.

At Secure Logic, Molly Mae oversees the development and market solutioning of the Sentinel, Secure Logic's state-of-the-art signals analysis solution, as well as its best-in-class software and data analytics technologies. She also serves as the Director of Security Governance and Oversight Organization at Dell Technologies, and leads a variety of product operations projects. Additionally, Molly Mae has seven years' experience serving in the United States military. She was one of the first women flight test engineers within the U.S. Air Force, has supported the Joint Special Operations Command (JSOC) and deployed to Afghanistan as part of Operation Enduring Freedom (OEF).



**Geoff Korrub**  
CTO & Cofounder

**Geoff Korrub** is an inventor, security solution architect and technology transformation expert with over 25 years of experience guiding companies through complex digital transformations, product innovations, and cross-functional initiatives. Geoff is also an advisor to the U.S. Department of Defense.

As the CTO at Secure Logic, Geoff developed the company's initial software solution for analyzing Wi-Fi, Bluetooth, cellular and automotive signals.

Over the past two decades, Geoff has led systems and security engineering projects at some of the country's top, multinational IT and cybersecurity companies, including: Palo Alto Networks, Juniper Networks, and Vectra AI. He specializes in guiding organizations to adopt consumable solutions that span cloud, data center, networking, cybersecurity and machine learning toolsets as manageable and effective solutions.

## CONTACT US:

[info@securelogic.us](mailto:info@securelogic.us)