

SECURE LOGIC FACT SHEET

ENERGY SECTOR

MANAGING RISKS TO CRITICAL ENERGY INFRASTRUCTURE: THE CHALLENGE

Mitigating risks to the country's energy infrastructure is paramount to maintaining operations, powering homes and businesses across the country, and keeping the economy running. Critical infrastructure leaders need smart, strategic and innovative solutions that not only help better manage the risks of today, but also help anticipate and be more resilient to the risks of tomorrow.

Traditional approaches to securing and managing risks to the country's critical energy infrastructure:

- **Offer Limited Visibility:** Traditional approaches to securing the country's critical infrastructure, like physical security measures, limit the visibility to critical risks. Current capabilities only tell part of the risk story.
- **Do Not Account for the Changing Risk & Digital Environment:** These approaches do not take into account the reality of today's - and tomorrow's - digital environment and the extraordinary growth trajectory of the Internet of Things (IoT).
- **Underutilize Data & Advanced Data Analytics Capabilities:** There are billions of untapped and readily available signals data points all around us. By leveraging the power of artificial intelligence and machine learning, these data points can provide a more complete picture of potential risks to any asset like a distribution facility, or a network of oil pipelines.

A refreshed approach to mitigating risks is needed. Energy & critical infrastructure leaders must adapt their risk management approaches to account for the changing digital and risk landscape.

IoT TRENDS

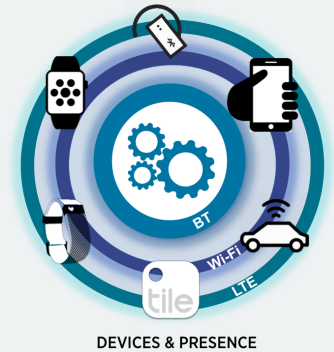
More personal and IoT devices are being connected than ever before, causing the quantity of transmitting signals to surge. This upward trend is only the beginning.

~12.3 B The number of IoT devices projected to be connected in 2021

127 The number of new devices connected to the internet every second

~27+ B The number of IoT devices projected to be connected in the world by 2025

Each transmittable device emits an invisible signal that can be analyzed to provide a more meaningful picture of your risk landscape.



OUR SOLUTION



Signals awareness is a critical component of managing risks to the country's energy infrastructure in the IoT era. Secure Logic understands this dynamic environment and has developed turnkey solutions to enhance digital awareness, improve risk mitigation and help critical infrastructure leaders stay ahead of evolving risks.

Together, our ecosystem of hardware, software, advanced data analytics and support solutions:

- Identify, collect, track and categorize signals that enter a defined perimeter
- Monitor and analyze Bluetooth, Wi-Fi and other cellular signals
- Employ artificial intelligence and machine learning technologies
- Establish signal behavior patterns and create rich digital profiles or personas of devices
- Send real-time alerts when a device of interest is on the premises
- Identify and confirm routine patterns of behavior
- Flag anomalous activities that typically go undetected
- Operate around the clock
- Provide actionable intelligence
- Create another layer of authentication

Signals technology goes beyond the traditional domains of security (visual, physical, digital) to provide a deeper level of understanding and awareness.

THE BENEFITS: HOW OUR INNOVATIVE SOLUTIONS HELP CRITICAL INFRASTRUCTURE LEADERS

By adopting and integrating our advanced signals awareness solutions, Secure Logic can help critical infrastructure leaders:



Enhance Digital Awareness

Our signals analysis solutions improve awareness of potential risks within your areas of interest. Whether monitoring signals entering a storage facility, collecting signals around an oil field, or tracking signals along a 100-mile long pipeline, our solutions help critical infrastructure leaders stay ahead of potential risks. Increased awareness also helps leaders run their business more efficiently by improving asset management.



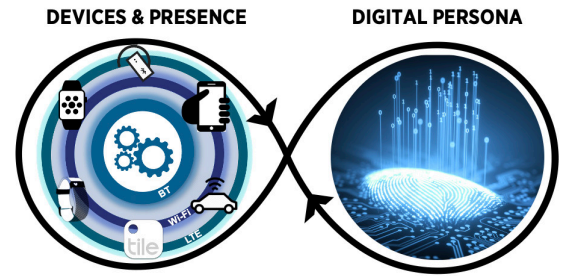
Improve Risk Mitigation and Response

Our artificial intelligence and machine learning technologies translate millions of data points into a more complete picture of your risk landscape, enabling you to make more informed and swifter decisions to mitigate risks.



Stay Ahead of the Evolving Digital Landscape and Improve Organizational Resilience

Our technologies not only analyze signals, they become smarter with every new transmitting IoT device or wearable that goes online. This helps energy and critical infrastructure leaders stay ahead of evolving digital trends and risks, and their potential impact on energy infrastructure.



We provide another layer of awareness to help mitigate risks to critical infrastructure assets.

AFFORDABLE SOLUTIONS, SEAMLESS IMPLEMENTATION

Secure Logic makes analyzing signals and enhancing security of critical infrastructure effortless. Whether adopting our full suite of signal technologies as a stand-alone solution, or integrating our technologies to enrich existing enterprise-wide security platforms, our solutions are:

- Turnkey
- Customizable
- Mobile, remote-managed, and readily-deployable
- Discrete
- Cost-effective

Additionally our signals awareness solutions are:

- **Field-Tested**, and have completed over 30,000 hours of field testing
- **Patented** by the U.S. Patent & Trademark Office
- **Deployed by the USG**, and are having a significant impact in improving digital awareness for a U.S. Department of Defense customer



OUR EXPERTS

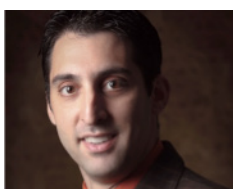
Our team is committed to helping organizations enhance their digital awareness and mitigate risks – it's our passion. With a combined 40 years of experience in national security, product and software development and business operations, Secure Logic's experts intimately understand the power of signals intelligence and advanced analytics in helping businesses and government entities alike improve awareness, mitigate risks and adapt to the evolving digital environment.



Molly Mae Potter
CEO & Cofounder

A distinguished veteran, engineer and technologist, **Molly Mae Potter** has over 15 years' experience in the fields of national security, technology, and aviation.

At Secure Logic, Molly Mae oversees the development and market solutioning of the Sentinel, Secure Logic's state-of-the-art signals analysis solution, as well as its best-in-class software and data analytics technologies. She also serves as the Director of Security Governance and Oversight Organization at Dell Technologies, and leads a variety of product operations projects. Additionally, Molly Mae has seven years' experience serving in the United States military.



Geoff Korrub
CTO & Cofounder

Geoff Korrub is an inventor, security solution architect and technology transformation expert with over 25 years of experience guiding companies through complex digital transformations, product innovations, and cross-functional initiatives. Geoff is also an advisor to the U.S. Department of Defense.

As the CTO at Secure Logic, Geoff developed the company's initial software solution for analyzing Wi-Fi, Bluetooth, cellular and automotive signals.

Over the past two decades, Geoff has led systems and security engineering projects at some of the country's top, multinational IT and cybersecurity companies, including: Palo Alto Networks, Juniper Networks, and Vectra AI. He specializes in guiding organizations to adopt consumable solutions that span cloud, data center, networking, cybersecurity and machine learning toolsets as manageable and effective solutions.

CONTACT US:

info@securelogic.us